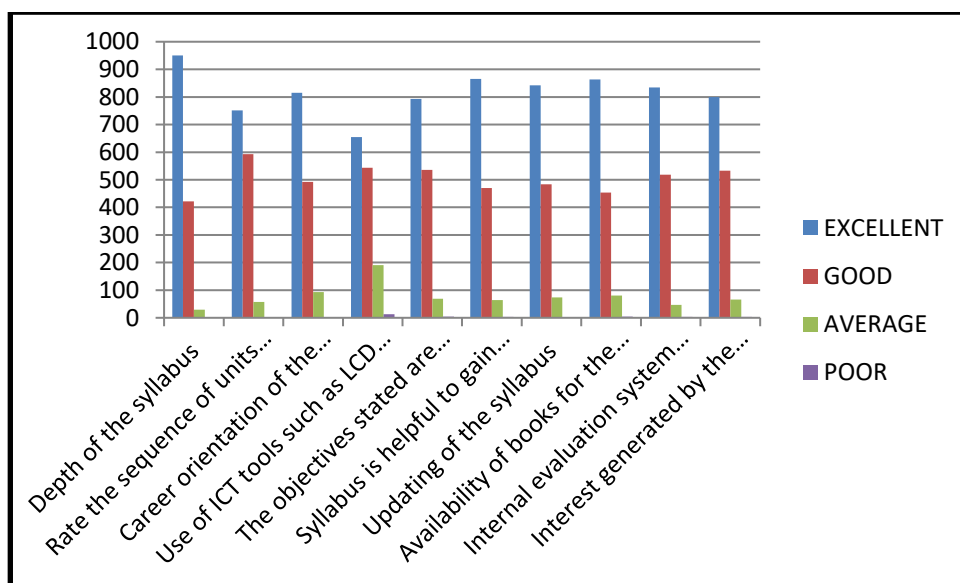




STUDENT'S FEEDBACK REPORT AND ANALYSIS ON CURRICULUM

2018-2019 ODD SEMESTER

S.NO	PARAMETERS	EXCELLENT	GOOD	AVERAGE	POOR	TOTAL
1	Depth of the syllabus	950	422	29	1	1402
2	Rate the sequence of units in the syllabus	751	593	57	1	1402
3	Career orientation of the syllabus	815	492	93	2	1402
4	Use of ICT tools such as LCD Projector, Web-resources, e-content etc.	655	543	191	13	1402
5	The objectives stated are relevant to the syllabus	739	536	69	4	1402
6	Syllabus is helpful to gain practical knowledge	865	470	64	3	1402
7	Updating of the syllabus	842	484	74	2	1402
8	Availability of books for the syllabus in the library	863	454	81	4	1402
9	Internal evaluation system regarding the syllabus	834	518	47	3	1402
10	Interest generated by the syllabus	800	533	66	3	1402

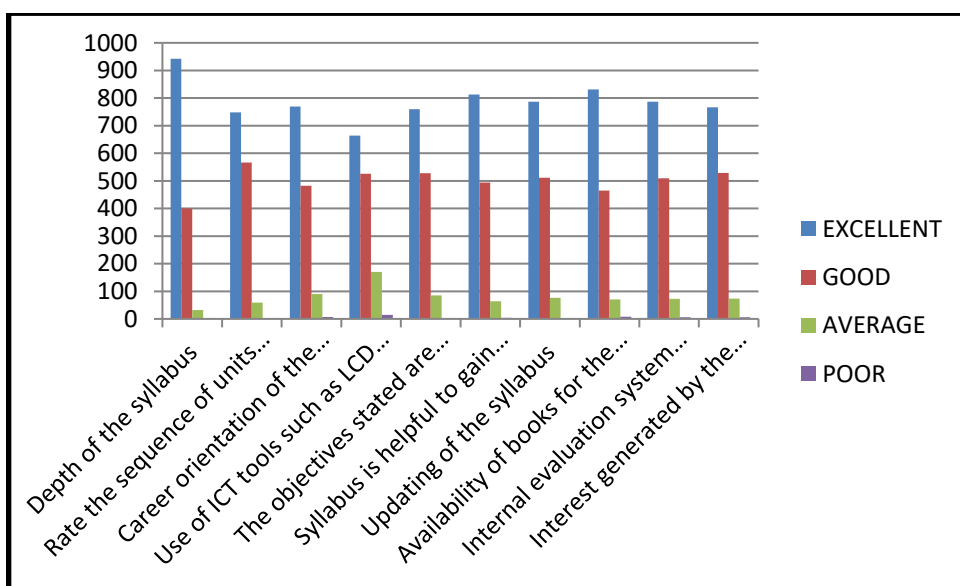




STUDENT'S FEEDBACK REPORT AND ANALYSIS ON CURRICULUM

2018-2019 EVEN SEMESTER

S.NO	PARAMETERS	EXCELLENT	GOOD	AVERAGE	POOR	TOTAL
1	Depth of the syllabus	942	400	32	1	1375
2	Rate the sequence of units in the syllabus	748	566	59	2	1375
3	Career orientation of the syllabus	769	482	90	7	1375
4	Use of ICT tools such as LCD Projector, Web-resources, e-content etc.	664	526	170	15	1375
5	The objectives stated are relevant to the syllabus	760	528	85	2	1375
6	Syllabus is helpful to gain practical knowledge	813	494	64	4	1375
7	Updating of the syllabus	787	511	76	1	1375
8	Availability of books for the syllabus in the library	831	465	71	8	1375
9	Internal evaluation system regarding the syllabus	787	509	73	6	1375
10	Interest generated by the syllabus	766	529	74	6	1375

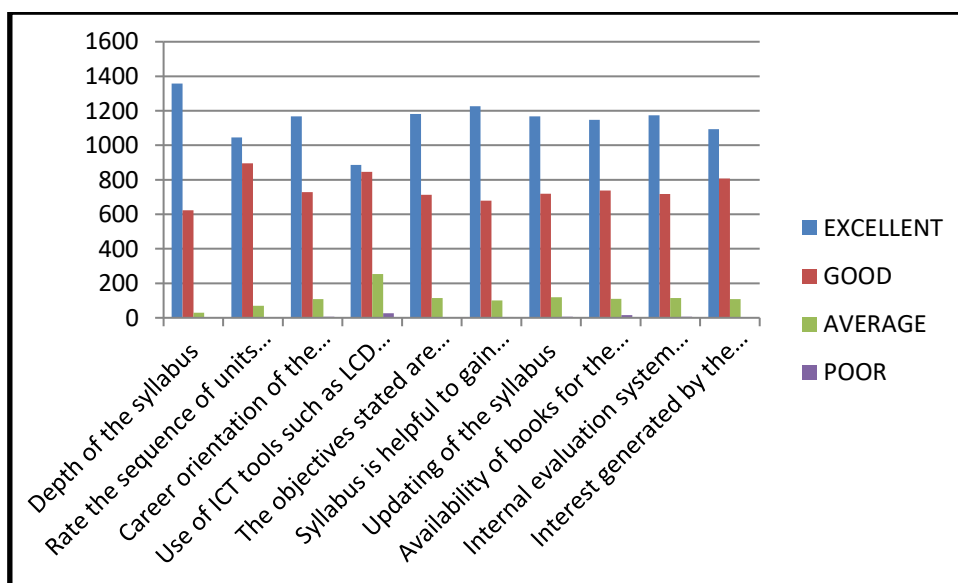




STUDENT'S FEEDBACK REPORT AND ANALYSIS ON CURRICULUM

2019-2020 ODD SEMESTER

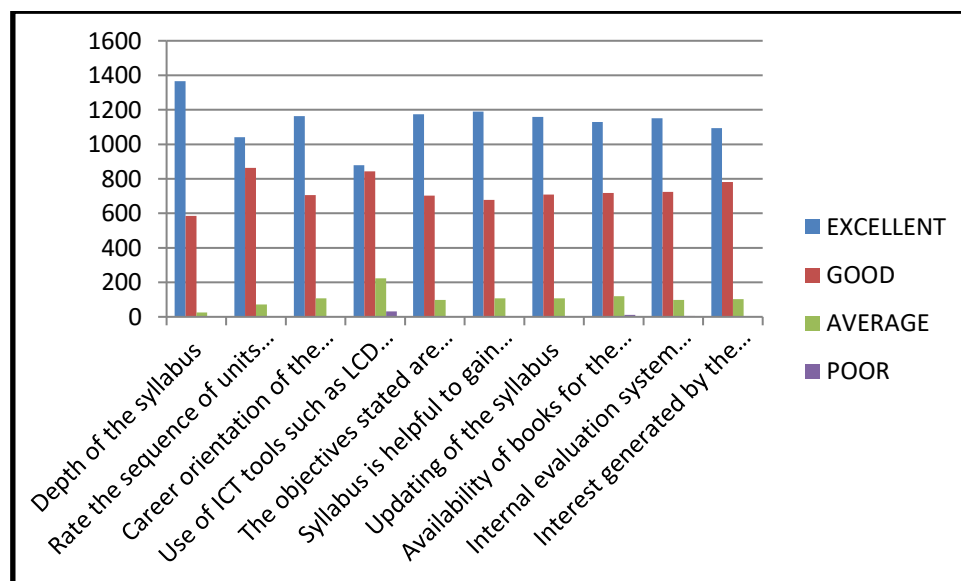
S.NO	PARAMETERS	EXCELLENT	GOOD	AVERAGE	POOR	TOTAL
1	Depth of the syllabus	1357	624	30	0	2011
2	Rate the sequence of units in the syllabus	1046	896	69	0	2011
3	Career orientation of the syllabus	1168	728	108	7	2011
4	Use of ICT tools such as LCD Projector, Web-resources, e-content etc.	886	846	253	26	2011
5	The objectives stated are relevant to the syllabus	1181	713	114	3	2011
6	Syllabus is helpful to gain practical knowledge	1227	679	101	4	2011
7	Updating of the syllabus	1167	719	119	6	2011
8	Availability of books for the syllabus in the library	1148	737	110	16	2011
9	Internal evaluation system regarding the syllabus	1174	717	114	6	2011
10	Interest generated by the syllabus	1094	808	108	1	2011



STUDENT'S FEEDBACK REPORT AND ANALYSIS ON CURRICULUM

2019-2020 EVEN SEMESTER

S.NO	PARAMETERS	EXCELLENT	GOOD	AVERAGE	POOR	TOTAL
1	Depth of the syllabus	1366	585	26	1	1978
2	Rate the sequence of units in the syllabus	1041	864	72	1	1978
3	Career orientation of the syllabus	1163	706	107	2	1978
4	Use of ICT tools such as LCD Projector, Web-resources, e-content etc.	879	844	223	32	1978
5	The objectives stated are relevant to the syllabus	1174	703	98	3	1978
6	Syllabus is helpful to gain practical knowledge	1190	678	107	3	1978
7	Updating of the syllabus	1159	709	107	3	1978
8	Availability of books for the syllabus in the library	1129	718	119	12	1978
9	Internal evaluation system regarding the syllabus	1151	724	98	5	1978
10	Interest generated by the syllabus	1093	782	102	1	1978

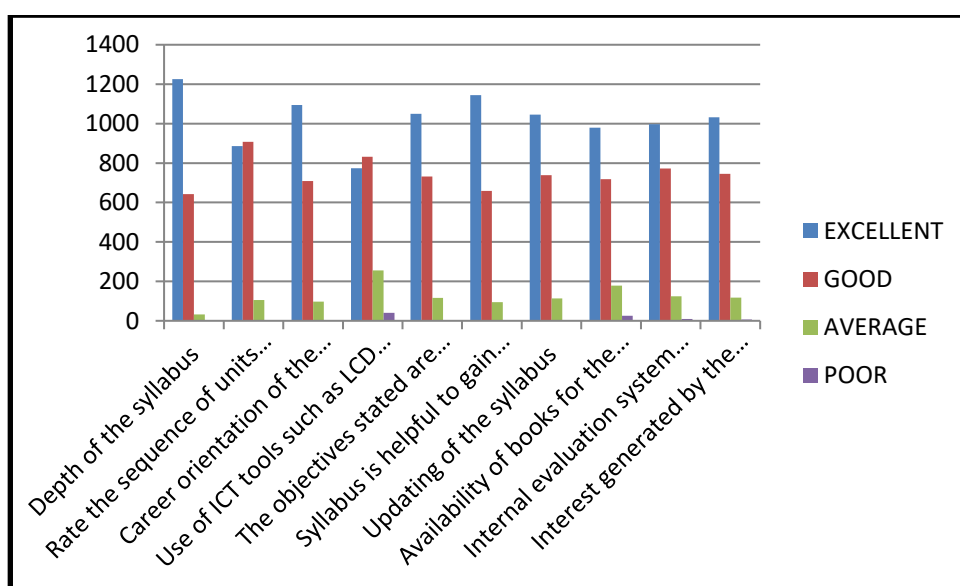




STUDENT'S FEEDBACK REPORT AND ANALYSIS ON CURRICULUM

2020-2021 ODD SEMESTER

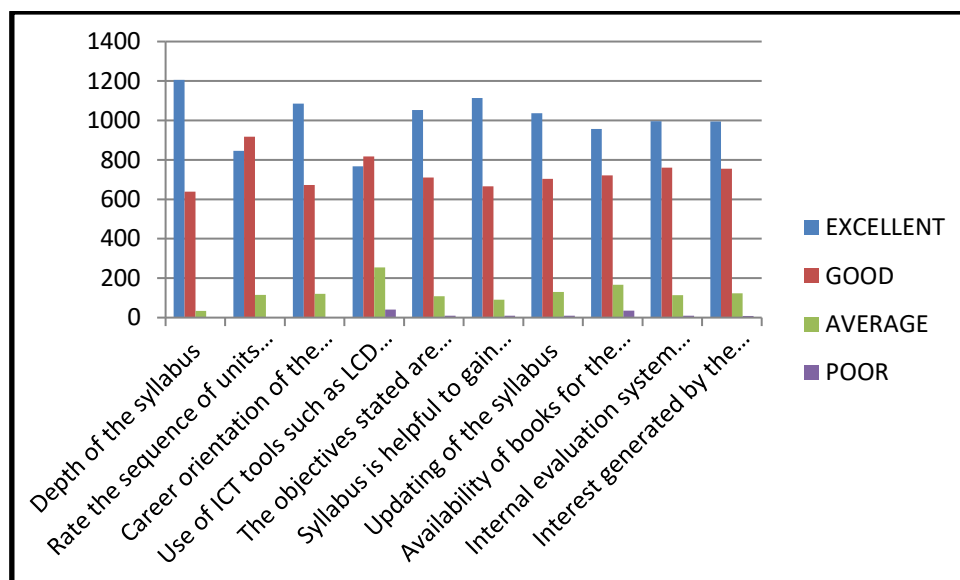
S.NO	PARAMETERS	EXCELLENT	GOOD	AVERAGE	POOR	TOTAL
1	Depth of the syllabus	1226	673	33	0	1902
2	Rate the sequence of units in the syllabus	886	908	106	2	1902
3	Career orientation of the syllabus	1094	709	97	2	1902
4	Use of ICT tools such as LCD Projector, Web-resources, e-content etc.	774	832	255	41	1902
5	The objectives stated are relevant to the syllabus	1050	732	116	4	1902
6	Syllabus is helpful to gain practical knowledge	1144	659	95	4	1902
7	Updating of the syllabus	1046	738	114	4	1902
8	Availability of books for the syllabus in the library	979	718	179	26	1902
9	Internal evaluation system regarding the syllabus	997	772	124	9	1902
10	Interest generated by the syllabus	1032	745	118	7	1902



STUDENT'S FEEDBACK REPORT AND ANALYSIS ON CURRICULUM

2020-2021 EVEN SEMESTER

S.NO	PARAMETERS	EXCELLENT	GOOD	AVERAGE	POOR	TOTAL
1	Depth of the syllabus	1205	639	34	2	1880
2	Rate the sequence of units in the syllabus	846	918	115	1	1880
3	Career orientation of the syllabus	1085	672	120	3	1880
4	Use of ICT tools such as LCD Projector, Web-resources, e-content etc.	767	817	255	41	1880
5	The objectives stated are relevant to the syllabus	1053	710	108	9	1880
6	Syllabus is helpful to gain practical knowledge	1114	666	91	9	1880
7	Updating of the syllabus	1036	704	130	10	1880
8	Availability of books for the syllabus in the library	957	721	166	36	1880
9	Internal evaluation system regarding the syllabus	996	761	114	9	1880
10	Interest generated by the syllabus	994	755	123	8	1880

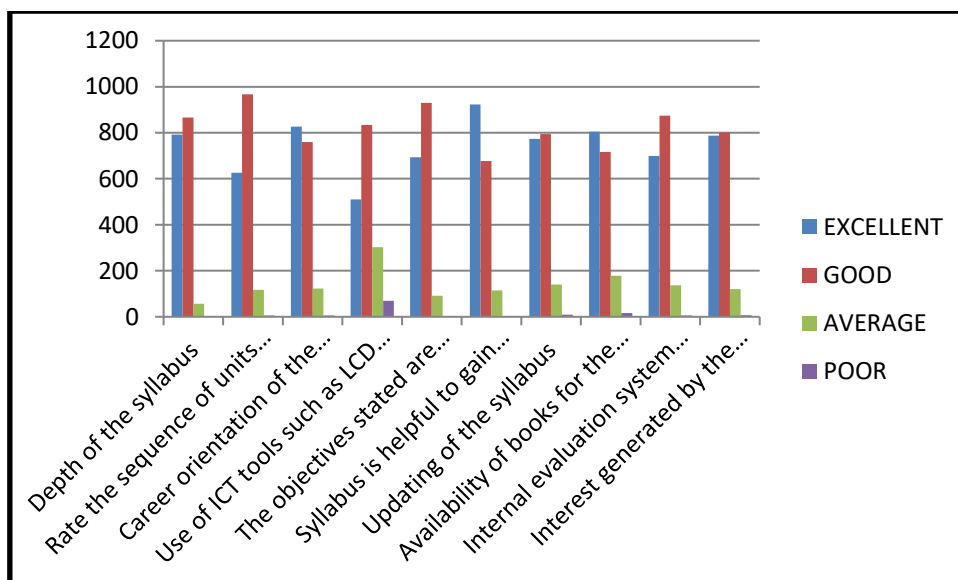




STUDENT'S FEEDBACK REPORT AND ANALYSIS ON CURRICULUM

2021-2022 ODD SEMESTER

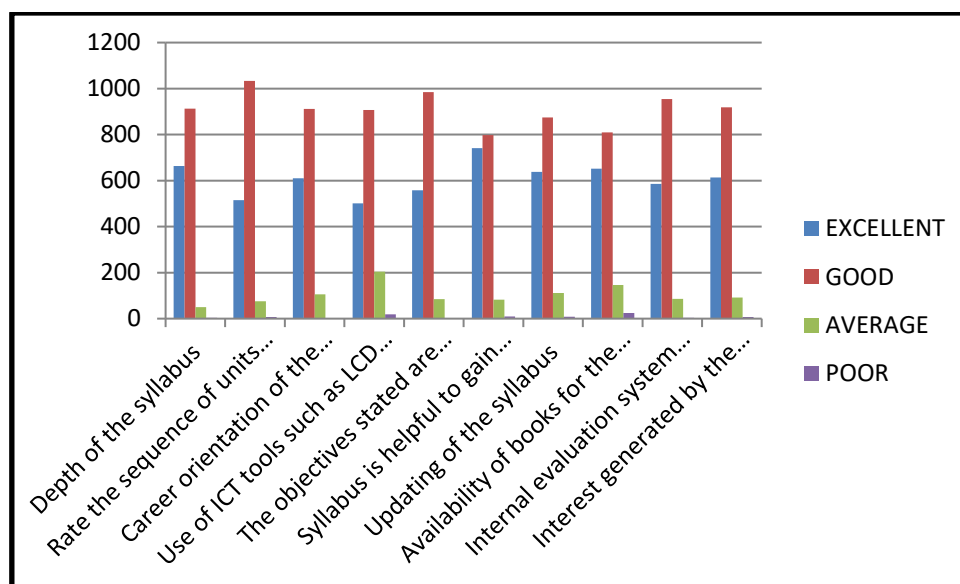
S.NO	PARAMETERS	EXCELLENT	GOOD	AVERAGE	POOR	TOTAL
1	Depth of the syllabus	792	866	57	1	1716
2	Rate the sequence of units in the syllabus	626	967	117	6	1716
3	Career orientation of the syllabus	827	760	123	6	1716
4	Use of ICT tools such as LCD Projector, Web-resources, e-content etc.	510	834	302	70	1716
5	The objectives stated are relevant to the syllabus	693	930	91	2	1716
6	Syllabus is helpful to gain practical knowledge	923	677	115	1	1716
7	Updating of the syllabus	773	794	140	9	1716
8	Availability of books for the syllabus in the library	805	717	178	16	1716
9	Internal evaluation system regarding the syllabus	699	874	137	6	1716
10	Interest generated by the syllabus	787	801	121	7	1716



STUDENT'S FEEDBACK REPORT AND ANALYSIS ON CURRICULUM

2021-2022 EVEN SEMESTER

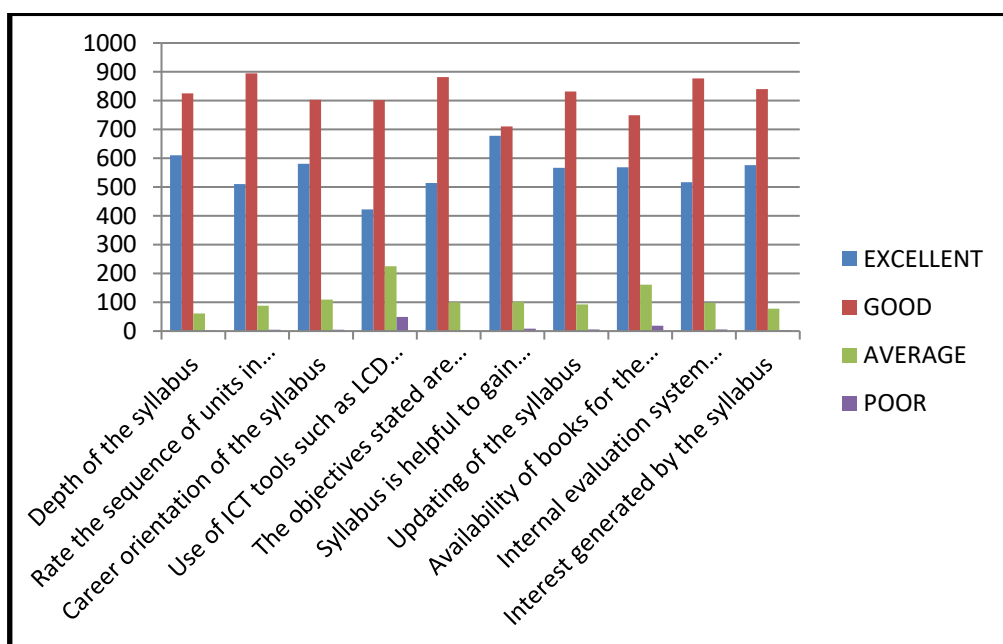
S.NO	PARAMETERS	EXCELLENT	GOOD	AVERAGE	POOR	TOTAL
1	Depth of the syllabus	664	913	50	4	1631
2	Rate the sequence of units in the syllabus	515	1033	76	7	1631
3	Career orientation of the syllabus	610	912	106	3	1631
4	Use of ICT tools such as LCD Projector, Web-resources, e-content etc.	501	907	204	19	1631
5	The objectives stated are relevant to the syllabus	558	985	85	3	1631
6	Syllabus is helpful to gain practical knowledge	741	798	83	9	1631
7	Updating of the syllabus	638	874	111	8	1631
8	Availability of books for the syllabus in the library	652	809	146	24	1631
9	Internal evaluation system regarding the syllabus	586	955	86	4	1631
10	Interest generated by the syllabus	614	918	92	7	1631



STUDENT'S FEEDBACK REPORT AND ANALYSIS ON CURRICULUM

2022-2023 ODD SEMESTER

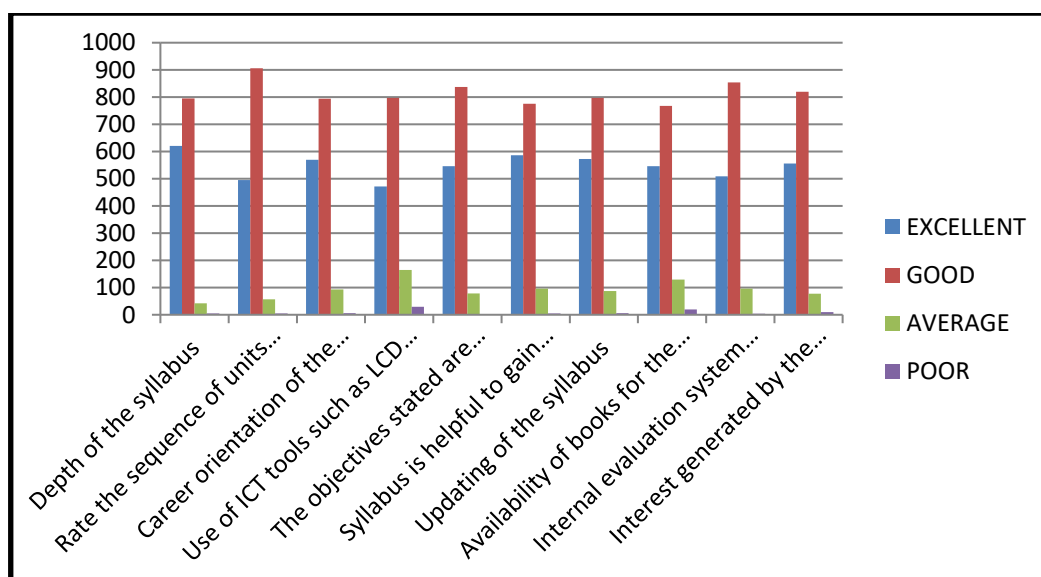
S.NO	PARAMETERS	EXCELLENT	GOOD	AVERAGE	POOR	TOTAL
1	Depth of the syllabus	610	825	61	2	1498
2	Rate the sequence of units in the syllabus	510	895	88	5	1498
3	Career orientation of the syllabus	581	803	109	5	1498
4	Use of ICT tools such as LCD Projector, Web-resources, e-content etc.	422	802	225	49	1498
5	The objectives stated are relevant to the syllabus	514	882	100	2	1498
6	Syllabus is helpful to gain practical knowledge	678	710	102	8	1498
7	Updating of the syllabus	567	832	93	6	1498
8	Availability of books for the syllabus in the library	569	749	161	19	1498
9	Internal evaluation system regarding the syllabus	517	877	98	6	1498
10	Interest generated by the syllabus	576	840	78	4	1498



STUDENT'S FEEDBACK REPORT AND ANALYSIS ON CURRICULUM

2022-2023 EVEN SEMESTER

S.NO	PARAMETERS	EXCELLENT	GOOD	AVERAGE	POOR	TOTAL
1	Depth of the syllabus	621	795	42	5	1463
2	Rate the sequence of units in the syllabus	495	906	57	5	1463
3	Career orientation of the syllabus	570	794	93	6	1463
4	Use of ICT tools such as LCD Projector, Web-resources, e-content etc.	472	797	165	29	1463
5	The objectives stated are relevant to the syllabus	546	837	78	2	1463
6	Syllabus is helpful to gain practical knowledge	586	776	96	5	1463
7	Updating of the syllabus	573	797	87	6	1463
8	Availability of books for the syllabus in the library	546	768	129	20	1463
9	Internal evaluation system regarding the syllabus	509	854	96	4	1463
10	Interest generated by the syllabus	556	820	77	10	1463



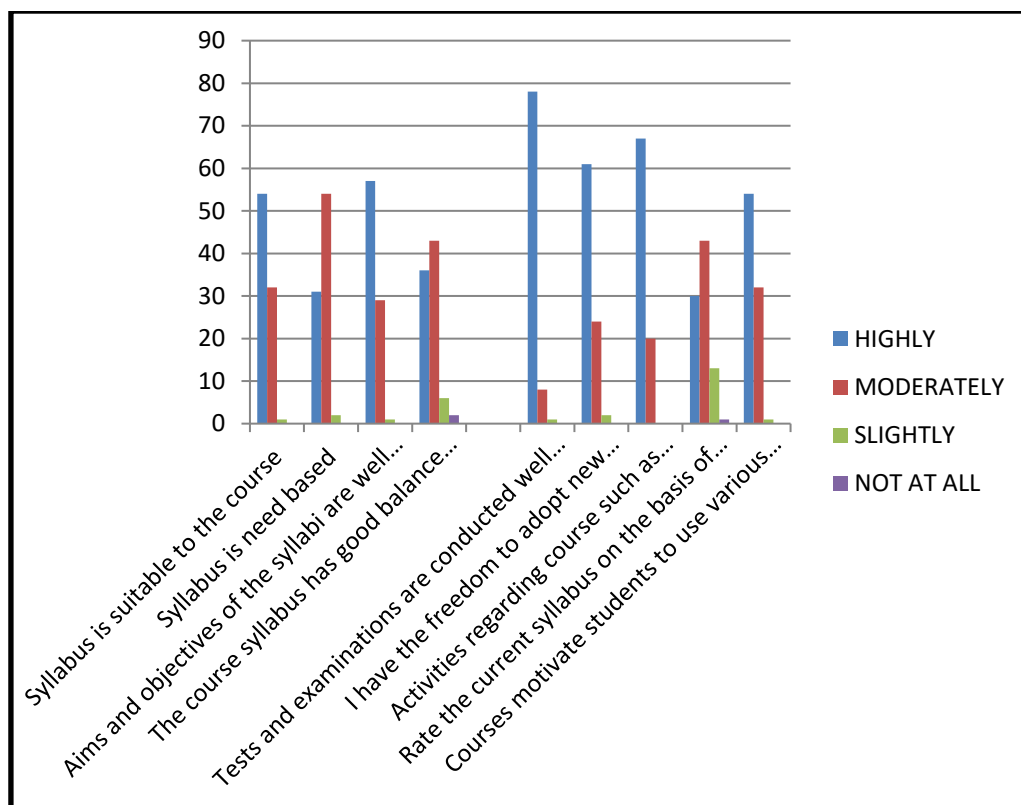

PRINCIPAL
SOKA IKEDA COLLEGE OF ARTS
AND SCIENCE FOR WOMEN
CHENNAI - 600 099



FACULTY FEEDBACK REPORT & ANALYSIS ON CURRICULUM

2020-2021

S.N O	PARAMETERS	HIGH LY	MODERATELY	SLIGHTLY	NOT AT ALL	TOTA L
1	Syllabus is suitable to the course	54	32	1	0	87
2	Syllabus is need based	31	54	2	0	87
3	Aims and objectives of the syllabi are well defined and clear to teachers and students.	57	29	1	0	87
4	The course syllabus has good balance between theory and application.	36	43	6	2	87
5	Tests and examinations are conducted well in time with proper coverage of all units in the syllabus.	78	8	1	0	87
6	I have the freedom to adopt new techniques/strategies to teach.	61	24	2	0	87
7	Activities regarding course such as assignment, seminar, internship, field visit are relevant	67	20	0	0	87
8	Rate the current syllabus on the basis of bridging the gap between industry and academics.	30	43	13	1	87
9.	Courses motivate students to use various resources that are available in the college and outside for their effective learning.	54	32	1	0	87



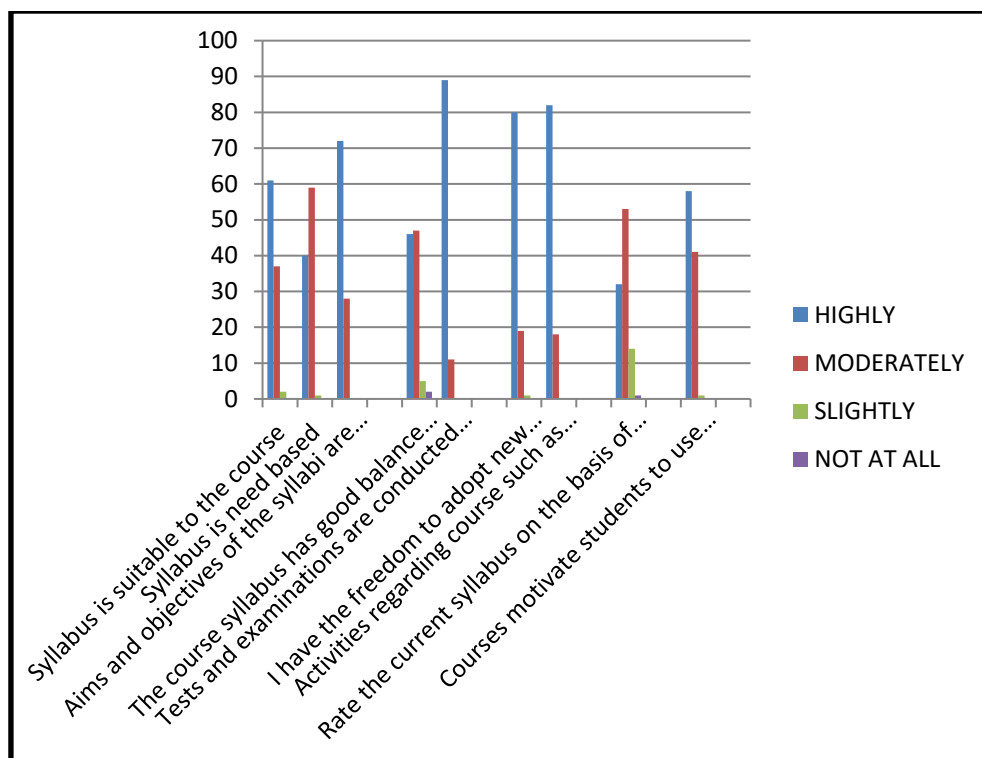

 PRINCIPAL
 SOKA IKEDA COLLEGE OF ARTS
 AND SCIENCE FOR WOMEN
 CHENNAI - 600 099



FACULTY FEEDBACK REPORT & ANALYSIS ON CURRICULUM

2021-2022

S.NO	PARAMETERS	HIGHLY	MODERATELY	SLIGHTLY	NOT AT ALL	TOTAL
1	Syllabus is suitable to the course	61	37	2	0	100
2	Syllabus is need based	40	59	1	0	100
3	Aims and objectives of the syllabi are well defined and clear to teachers and students.	72	28	0	0	100
4	The course syllabus has good balance between theory and application	46	47	5	2	100
5	Tests and examinations are conducted well in time with proper coverage of all units in the syllabus.	89	11	0	0	100
6	I have the freedom to adopt new techniques/strategies to teach.	80	19	1	0	100
7	Activities regarding course such as assignment, seminar, internship, field visit are relevant	82	18	0	0	100
8	Rate the current syllabus on the basis of bridging the gap between industry and academics.	32	53	14	1	100
9.	Courses motivate students to use various resources that are available in the college and outside for their effective learning.	58	41	1	0	100



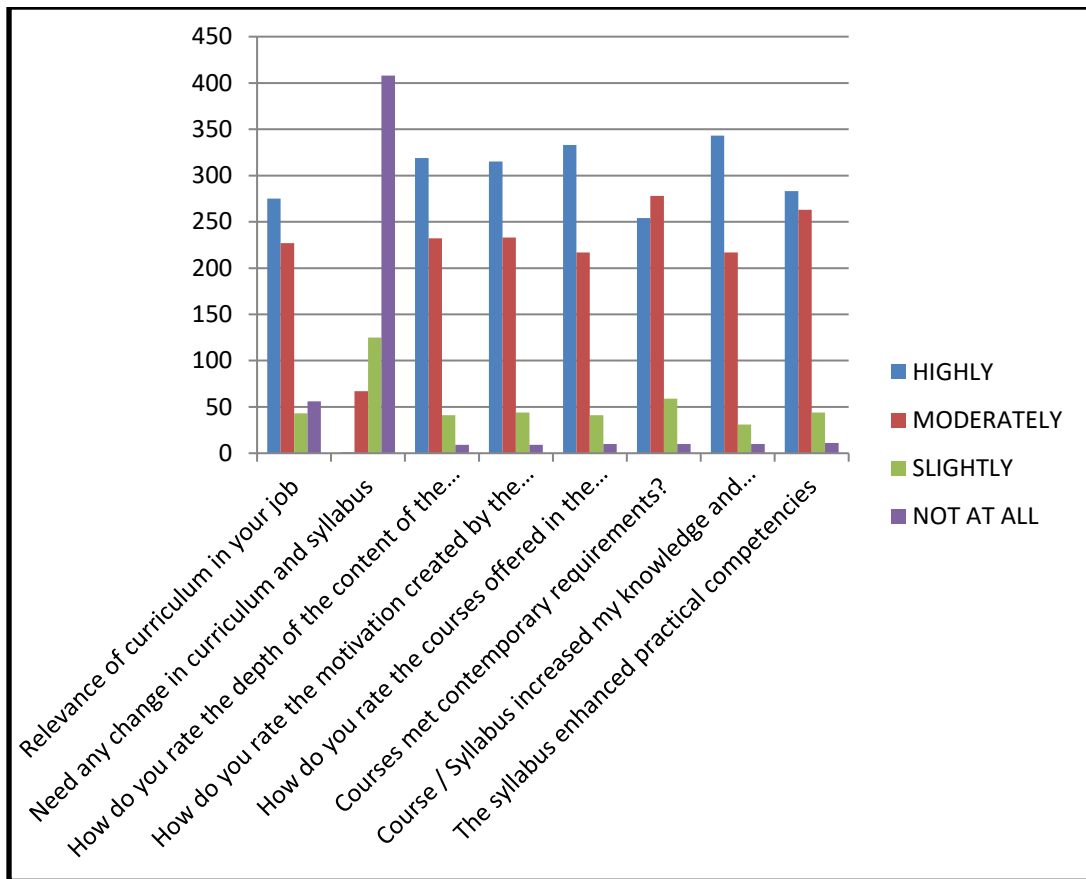

PRINCIPAL
 SOKA IKEDA COLLEGE OF ARTS
 AND SCIENCE FOR WOMEN
 CHENNAI - 600 099



ALUMNAE FEEDBACK REPORT & ANALYSIS ON CURRICULUM

2017-2020

S.NO	PARAMETERS	HIGHLY	MODERATELY	SLIGHTLY	NOT AT ALL	TOTAL
1	Relevance of curriculum in your job	275	227	43	56	601
2	Need any change in curriculum and syllabus	1	67	125	408	601
3	How do you rate the depth of the content of the course?	319	232	41	9	601
4	How do you rate the motivation created by the syllabus to pursue Post Graduation / Research in the particular programme?	315	233	44	9	601
5	How do you rate the courses offered in the programme facilitated Employment Opportunities / Higher Studies?	333	217	41	10	601
6	Courses met contemporary requirements?	254	278	59	10	601
7	Course / Syllabus increased my knowledge and understanding of the subject studied.	343	217	31	10	601
8	The syllabus enhanced practical competencies	283	263	44	11	601



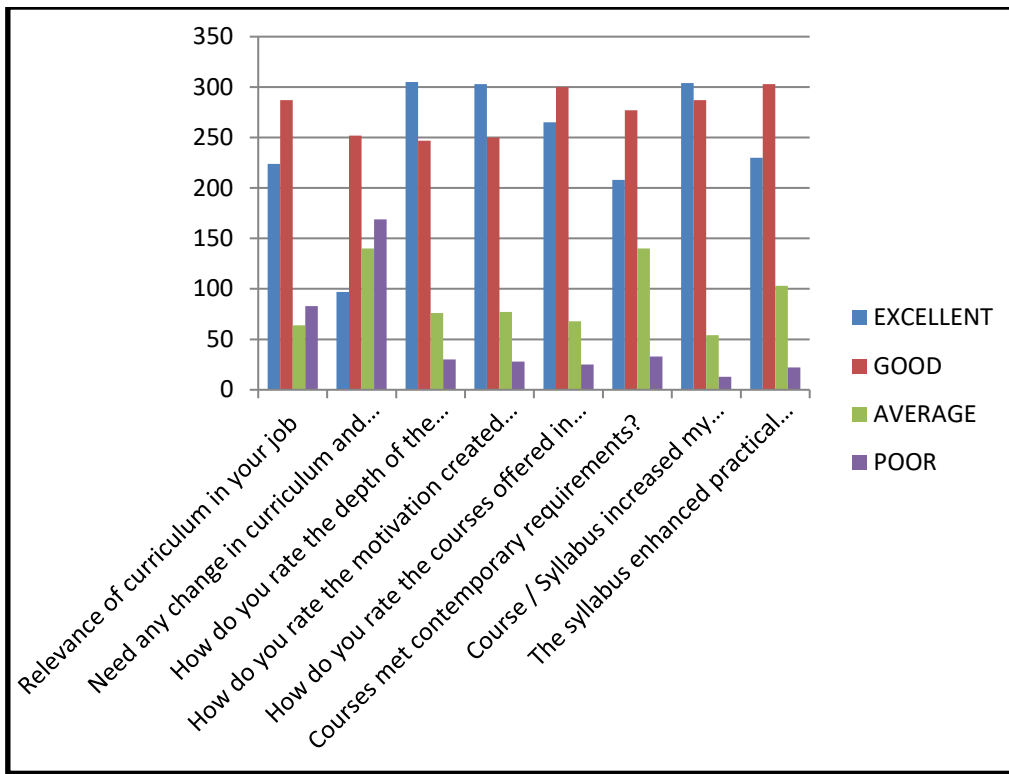

 PRINCIPAL
 SOKA IKEDA COLLEGE OF ARTS
 AND SCIENCE FOR WOMEN
 CHENNAI - 600 099



ALUMNAE FEEDBACK REPORT & ANALYSIS ON CURRICULUM

2018-2021

S.NO	PARAMETERS	HIGHLY	MODERATELY	SLIGHTLY	NOT AT ALL	TOTAL
1	Relevance of curriculum in your job	224	287	64	83	658
2	Need any change in curriculum and syllabus	97	252	140	169	658
3	How do you rate the depth of the content of the course?	305	247	76	30	658
4	How do you rate the motivation created by the syllabus to pursue Post Graduation / Research in the particular programme?	303	250	77	28	658
5	How do you rate the courses offered in the programme facilitated Employment Opportunities / Higher Studies?	265	300	68	25	658
6	Courses met contemporary requirements?	208	277	140	33	658
7	Course / Syllabus increased my knowledge and understanding of the subject studied.	304	287	54	13	658
8	The syllabus enhanced practical competencies	230	303	103	22	658




 PRINCIPAL
 SOKA IKEDA COLLEGE OF ARTS
 AND SCIENCE FOR WOMEN
 CHENNAI - 600 099



SOKA IKEDA COLLEGE OF ARTS AND SCIENCE FOR WOMEN
(Affiliated to the University of Madras)
Chennai 600 099, Tamilnadu.

ACTION TAKEN REPORT ON THE FEEDBACK RECEIVED

STAKEHOLDERS: STUDENTS

S.NO	SUGGESTIONS	ACTION TAKEN
1	Majority of the students rated that the usage of ICT tool such as LCD projector, web resources and e-content etc., is average	To resolve this issue, faculty uploaded videos of their courses they handle in website for the benefit of the students. ICT enabled classrooms were increased.
2	Few students rated that the availability of books for the syllabus in the library is average	The books related to revised syllabus were increased in library. NDLI club was initiated and N-List was subscribed.
3	Students expressed that the practical knowledge gained through the courses was less.	Industrial visits and internships are arranged to the students to get practical knowledge.



PRINCIPAL
SOKA IKEDA COLLEGE OF ARTS
AND SCIENCE FOR WOMEN
CHENNAI - 600 099



SOKA IKEDA COLLEGE OF ARTS AND SCIENCE FOR WOMEN
(Affiliated to the University of Madras)
Chennai 600 099, Tamilnadu.

ACTION TAKEN REPORT ON THE FEEDBACK RECEIVED

STAKEHOLDERS: FACULTY

S.NO	SUGGESTIONS	ACTION TAKEN
1	The faculty felt that the syllabus is not need based.	Certificate courses and value added courses are offered in order to compensate the need.
2	The rating of current syllabus on the basis of bridging the gap between industry and academics is moderate.	Special lectures and workshops were conducted by inviting industry experts in order to give hands-on experience.



PRINCIPAL
SOKA IKEDA COLLEGE OF ARTS
AND SCIENCE FOR WOMEN
CHENNAI - 600 099



SOKA IKEDA COLLEGE OF ARTS AND SCIENCE FOR WOMEN
(Affiliated to the University of Madras)
Chennai 600 099, Tamilnadu.

ACTION TAKEN REPORT ON THE FEEDBACK RECEIVED

STAKEHOLDERS: ALUMNAE

S.NO	SUGGESTIONS	ACTION TAKEN
1	The syllabus assessment of students' motivation to pursue post-graduation/ research is moderate.	Research and Development Cell is initiated to encourage students to pursue research. The cell hosted national and international conferences and seminars. Guest lectures by subject experts were also initiated.
2	The rate of the courses offered in the programmes facilitated employment opportunities is moderate	To develop student's employability skills, the Institution's Innovation Council, Skill Development Cell and Career Guidance Cell were established.
3	The curriculum's enhancement of practical competencies is inadequate.	Value-added and certificate courses are provided to enhance practical competencies.



PRINCIPAL
SOKA IKEDA COLLEGE OF ARTS
AND SCIENCE FOR WOMEN
CHENNAI - 600 099